

The Lamplighter

TEXAS RURAL ELECTRIC WOMEN'S ASSOCIATION

JUNE 2016

Congratulations To Our Scholarship Winners!



**Molly Barnick
Gonzales**
Guadalupe Valley EC



Kayln Burrell
San Antonio
Medina EC



**Lauren Haun
Cuero**
Guadalupe Valley EC



**Tori Hughes
Crockett**
Houston County EC



**Hunter Kloiber
Littlefield**
Lamb County EC



Danyel Lara
Lubbock
South Plains EC



Mikena Mader
Sunset
Wise EC



Tarah Moore
Hico
United Cooperative
Services



Kelsey Owens
Palestine
Houston County EC



Matthew Pinkert
Levelland
Lamb County EC



Dylan Price
Santo
United Cooperative
Services



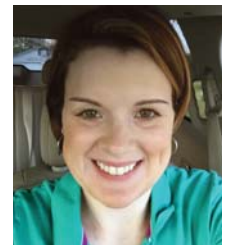
Jennifer Prnka
West
Bryan Texas Utilities



Gabrielle Quintanilla
Karnes City
Karnes EC



Robin Scheffler
Cibolo
Guadalupe Valley EC



Cassie Shriver
Sunset
Wise EC



Preston Turner
Van
Wood County EC



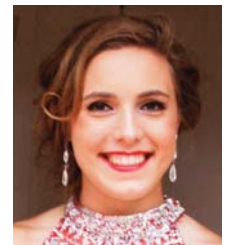
Emily Wade
Lubbock
South Plains EC



Hailey Wright
Paducah
South Plains EC



McKenna Yauck
Claude
Greenbelt EC



Caitlin Zacharias
Oglesby
Heart of Texas EC

In This Issue: President's Message Page 2 TEC Annual Meeting Activities Page 2
Donations Needed for Silent Auction, Art and Crafts Sale Page 3 Membership Renewals Page 4

President's Message

Join Us for the TREWA Annual Membership Meeting in San Antonio This Summer



Holly Gunter, President

Dear TREWA Members:

Have you ever strolled down the Riverwalk, visited the Alamo, shopped at the market or experienced the sights at Sea World? You can do all of these things and more! Just pack your bags and join TREWA July 31–August 3 at the TEC Annual Meeting at the La Cantera Resort in San Antonio.

Preparations are underway for our annual membership meeting, the arts and crafts sale, silent auction, group raffles, Visa raffle and membership/renewal drive that are all part of the activities that take place during the TEC Annual Meeting.

TREWA has roots that were planted deep many, many years ago by the wise women who began this organization. TREWA now has more than 1,100 members, including cooperative directors, managers, employees and members—and anyone who supports TREWA's efforts.

TREWA's arts and crafts fundraiser gives opportunities to purchase homemade, handcrafted or redesigned items. All the beautiful and unique items are donated by gifted and talented members. We know there are many talented individuals out there and we encourage everyone to contribute their talents and efforts to our arts and crafts booth. If you are unable to attend and would like to participate by donating an item, please complete the form on the last page of this issue of *The Lamplighter*.

Other fundraising tools include the silent auction, group raffles and Visa raffle for attendees to take part in during the meeting. The sales allow us to fund the TREWA Scholarship Program, sponsor T-shirts for the Government-in-Action Youth Tour, and support the political advocacy effort through Rural Friends/ACRE.

We are so grateful for each and every one of you who chooses to participate in the fundraising events, and for the members of TREWA.

What a blessing to say "Thank you" to each of you for making it possible for TREWA to award 20 \$1,500 scholarships to students throughout the state (see Page 1 for the winners). This year, there were 53 applicants, and as you can imagine, the judges had a difficult time selecting only 20 recipients. If by chance you were an applicant who did not get selected this year, please apply again next year.

The support of our membership is the driving force that allows us to have the resources to provide these scholarships and support

the other entities that receive funds from TREWA.

Our mission has always been to educate and create interest in rural electric cooperatives and the issues that affect them.

Joining TREWA, participating in the fundraising efforts and donating arts and crafts are great ways to support this mission that focuses on scholarships, Youth Tour and Rural Friends/ACRE.

Our membership meeting will be Tuesday, August 2, at 10 a.m. The program this year, "Life is a Cookie," will be presented by Julie Burch, who will share insights on handling change and deciding who you will be. Come prepared to learn and laugh.

Stroll on down San Antonio way and sit a spell with us. A cold drink, some good food and fellowship are just waiting for you. We will have door prizes, raffles and many more activities to keep you strolling along. See you in San Antonio.



TEC Annual Meeting Spouse and Family Activities

MONDAY-WEDNESDAY, AUGUST 1-3

- Visit and support TREWA activities and TEC Showcase
- Splash time! The main resort pool is the perfect spot for the entire family to enjoy, and there is also a separate kids' pool, which includes a splash area for toddlers and two waterslides.
- Check out La Cantera's Kids Club activities and the on-site arcade.

MONDAY AFTERNOON AND ALL DAY TUESDAY

- Check out the Touchstone Energy hot air balloon.

TUESDAY, AUGUST 2

- 7:00 a.m. **TEC Membership Breakfast Buffet**
- 10:00 a.m. **TREWA Membership Meeting and Spouse Program**
- 11:30 a.m. **Rural Friends/ACRE Membership Luncheon**
- 2:30 p.m. **TEC/Solomon Alliance 10-Year Anniversary Cookie Break**
- 6:00 p.m. **Viva Las Vegas Reception, Dinner and Entertainment**
Join us for this family-friendly event with cocktails, dinner, entertainment, prizes and more!

WEDNESDAY, AUGUST 3

- 10:20 a.m. **Swing Riders Show With Doc and Mike Blakely**
The Swing Riders Show is family-friendly, featuring cowboy music and fiddle tunes plus good, clean cowboy humor and tall tales.

Help Make Fundraising Efforts a SUCCESS!

Arts and crafts and silent auction items needed for this year's fundraising event

TREWA's Arts and Crafts Sale and Silent Auction were huge successes this past August during the TEC Annual Meeting in Austin.

Many of you donated craft items for this event, and we appreciate your talents and all of the extra effort in supporting TREWA. To make our 2016 event at the TEC Annual Meeting in San Antonio even better, we again need you to consider providing an arts and crafts item or an item that will have members scrambling to bid during the silent auction. The proceeds continue to fund scholarships each year and support Rural Friends/ACRE.

To send a craft item or make a donation to TREWA, please mail it to Bobbi Byford, Trinity Valley EC, P.O. Box 888, Kaufman, TX 75142. You can also give your craft or silent auction item to any TREWA board member. Again, thank you for your continued support.

Your donated items help provide funds for TREWA scholarships and donations to Rural Friends/ACRE.



YES! I will donate a hand-crafted item to TREWA for the 2016 Arts and Crafts Sale.

First name _____

Last name _____

Address _____

City _____

State _____ ZIP _____

Item donated _____

Value amount _____

If you are unable to attend the meeting and would like to donate a hand-crafted item, please designate someone to bring your item for you:

Name _____

2015-16 TREWA Board of Directors

Group 1

Ann Horn

Arts & Crafts

Jasper-Newton EC
(409) 423-2241 ext. 120
ahorn@jnec.com



Group 2

Kendra Markwardt

HILCO EC

(254) 687-2331 ext. 1145
kmarkwardt@hilco.coop



Group 3

Karen Culpepper

Scholarship Chair

Wise EC
(940) 626-3003
kculpepper@wiseec.com



Group 4

Rachel Ford

Comanche EC

(325) 356-2533
rford@ceca.coop



Group 5

Kathy Shipp

Secretary-Treasurer

Lamb County EC
(806) 385-5191
kshipp@lcec.coop



Group 6

Tawnya Boos

Membership Chair

Central Texas EC
1-800-900-2832
tawnya.boos@ctec.coop



Group 7

Holly Gunter

President/Raffles

Medina EC
(830) 741-7343
hollyg@medinaec.org



Bobbi Byford

Immediate Past President/Lamplighter

Trinity Valley EC
(469) 261-9876
bobbi@tvec.coop



The Texas Rural Electric Women's Association helps improve life in rural Texas by supporting education and fostering a unified understanding of electric cooperatives and the communities they power.

Texas Electric Cooperatives, Inc., 1122 Colorado St., 24th Floor, Austin, TX 78701

Time To Renew Your TREWA Membership

Memberships expire July 31, 2016.

The TREWA Board of Directors thanks you for your continued support of this organization.

TREWA membership is open to men and women of rural electric cooperatives. We encourage you to become a part of our growing organization as we continue to light the lamp of knowledge for the future.

Membership has its privileges. The children of TREWA members are eligible to apply for scholarships sponsored by TREWA. Members also receive an edition of *The Lamplighter*, which is sent twice a year via email.

Regular membership price is \$10 per year and, to date, we have more than 1,100 members. Once again, TREWA is offering membership at \$5 per person to cooperatives that enroll 100 percent of their directors, directors' spouses and employees (or spouse of an employee). We would like to acknowledge and thank the cooperatives that currently have 100 percent membership:

- ▶ Comanche EC, Group 4
- ▶ CoServ, Group 3
- ▶ Heart of Texas EC, Group 2
- ▶ Houston County EC, Group 1
- ▶ North Plains EC, Group 5
- ▶ Taylor EC, Group 4
- ▶ Tri-County EC, Group 3

Renew your membership today by completing and returning the form at right. TREWA membership forms are also available at trewa.org.

TREWA Membership Form

Membership valid August 1, 2016, through July 31, 2017.

Membership: Renewal New Member

Membership Fees

Please check the appropriate dues assessments:

- \$10 (1 year) \$20 (2 years)

First name _____

Last name _____

Address _____

City _____

State _____

ZIP _____

Home phone/cellphone _____

Work phone _____

Email _____

Cooperative (spell out) _____

Relationship to cooperative:

- Employee Director Member
 Spouse of Employee Spouse of Director Other

Return to:

Mail: TREWA
 Tawnya Boos
 Membership Chair
 1122 Colorado St., 24th Floor
 Austin, TX 78701

Email: tawnya.boos@ctec.coop