

The Lamplighter

TEXAS RURAL ELECTRIC WOMEN'S ASSOCIATION

JUNE 2015

Congratulations to Our Scholarship Winners!



Evan Mark Bell
Fredericksburg
Pedernales EC



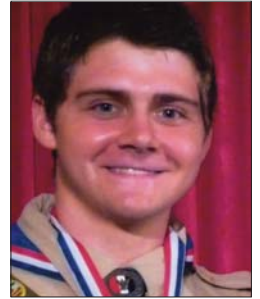
Joshua Davis
Apple Springs
Houston County EC



Sterling Dowden
Roby
Big Country EC



Brooke Durham
Levelland
Lamb/Bailey County ECs



Jacob Earwood
Bryan
Bryan Texas Utilities



Avery Elizabeth Faulks
Sulphur Springs
Farmers EC



Megan Hilscher
Victoria
Victoria EC



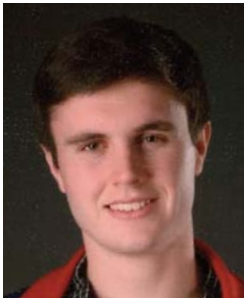
Jase Jones
Lubbock
Lyntegar EC



Lindsey Knobloch
Elgin
Bluebonnet EC



Brady Miller
Darrouzett
North Plains EC



Austin Parsons
Abilene
Taylor EC



Vance Reed Parsons
Spur
South Plains EC



Maci Stuart
Follett
North Plains EC



Ciera Ward
Tyler
Cherokee County EC



Sydney Daun White
Littlefield
Lamb County EC

In this Issue: **President's Message** Page 2 **TEC Annual Meeting Highlights** Page 2
Donations Needed for Silent Auction, Art and Crafts Sale Page 3 **Membership Renewals** Page 4

President's Message

Everything is bigger and better in Texas—and TREWA



Holly Gunter, President

Dear TREWA Members:

“Honor the Texas flag; I pledge allegiance to thee, Texas, one state under God, one and indivisible.”

We take great pride in our state. As you are all aware, everything is bigger and better in Texas. This is true in our TREWA organization.

Our roots were planted deep many, many, years ago by the wise

women who began this organization. Our roots continue to branch out and grow bigger and bigger. TREWA has more than 1,100 members to date. Our membership includes directors, managers, cooperative employees, cooperative members and anyone who supports TREWA's efforts.

Austin is the site for this year's TEC Annual Meeting and the TREWA Annual Membership Meeting. Plans and preparations are underway for our annual membership meeting. The arts and crafts sale, silent auction, group raffles, Visa raffle and membership drive/renewal are some of the activities that take place during the TEC Annual Meeting. We will gather at the Renaissance Austin Hotel August 2–5.

The stars at night are big and bright—and so are the wonderful items you will find in the arts and crafts booth. All the beautiful and unique items donated are given by the gifted and talented members, and give the attendees plenty of choices. We know there is an enormous number of talented individuals out there, and we encourage everyone to contribute your talents and efforts to our arts and crafts booth. If you are unable to attend and would like to participate by donating an item, please complete the form located on the last page of the Lamplighter.

Other fundraising tools are the silent auctions, group raffles and Visa raffle for the attendees to take part in during the meeting. The sales have allowed us to fund the TREWA Scholarship Fund, provide T-shirts for the Government-in-Action Youth Tour and support the political advocacy effort, Rural Friends/ACRE. We are so grateful to each and every one of you who choose to participate and are members of TREWA.

Hats off to each of you for making it possible to present \$1,500 scholarships to 15 students throughout the state (see Page 1 for the winners). This year, there were 88 applicants, and as you can imagine, the judges had a difficult time selecting only 15 recipients. If by chance you were an applicant and did not get selected this year, please apply again next year. The support of

our membership is the driving force in the ability to provide these scholarships and the many other entities that receive funds from TREWA. Our mission has always been to educate and create interest in rural electric systems and issues. What a great way to support this mission, focusing on programs like the scholarships, Youth Tour and Rural Friends/ACRE.

Our membership meeting will be Tuesday, August 4, at 9:30 a.m. The program this year is presented by Mark Ballard. Bigger, as we stated, is better, and Mark will provide a demonstration on creating big, beautiful wreaths for your home.

So dust off your denim, shine your boots, bring your bling and join us. You may strike up conversations with old friends, meet new friends or just kick back and enjoy some time with us. Let us not forget there will be door prizes, so giddy on up, and we'll see you in Austin in August.



TEC Annual Meeting Spouse and Family Activities

MONDAY-WEDNESDAY, AUGUST 3–5

- Visit and support TREWA activities and TEC Showcase
- Take a trip back in time by visiting the Co-op History Display (Monday and Tuesday only)
- Take in the sights and sounds of Austin

TUESDAY, AUGUST 4

7:00 a.m. **TEC Membership Breakfast Buffet**

9:30 a.m. **TREWA Annual Membership Meeting and Spouse Program**

Be inspired as Mark Ballard provides a demonstration on creating big, beautiful wreaths for your home.



11:45 a.m. **Rural Friends/ACRE Membership Luncheon**

2:00 p.m. **TEC 75th Anniversary Cookie Break**

6:00 p.m. **Co-op Country Dinner and Reception**

Cocktails, dinner, music, dancing, prizes and games!
Cash in your prize winnings at the TEC General Store.

WEDNESDAY, AUGUST 5

11:00 a.m. **Songwriting With Co-ops**

Acclaimed singer/songwriter Darden Smith will share his journey from aspiring rock star to songwriting champion for those struggling to regain their voices. Join the fun as together, we will tell our story and write our own song.

We Need Your Help!

Arts and crafts and silent auction items needed for this year's fundraising event

TREWA's Arts and Crafts Sale and Silent Auction were both a huge success last August during the TEC Annual Meeting in Galveston.

Many of you donated craft items for this event, and we appreciate your talents and all of the extra effort in supporting TREWA. To make our 2015 event at the TEC Annual Meeting in Austin even better, we again need for you to consider providing an arts and crafts item or an item that will have the members scrambling to bid on during the silent auction. The proceeds continue to fund scholarships each year and also support Rural Friends/ACRE.

To send a craft item or make a donation to TREWA, please mail it to Bobbi Byford, Trinity Valley EC, P.O. Box 888, Kaufman, TX 75142. You can also give your craft or silent auction item to any TREWA board member. Again, thank you for your continued support.

Your donated items help provide funds for TREWA scholarships and donations to Rural Friends/ACRE.



YES! I will donate a hand-crafted item to TREWA for the 2015 Arts and Crafts Sale.

First name _____

Last name _____

Address _____

City _____

State _____ ZIP _____

Item donated _____

Value amount _____

If you are unable to attend the meeting and would like to donate a hand-crafted item, please designate someone to bring your item for you:

Name _____

2014-15 TREWA Board of Directors

Group 1

Lynne Erickson
Houston County EC
(936) 852-7224
lynne@houstoncountyelec.com



Group 2

Dee Dee Lauterbach
Historian/Arts & Crafts
Heart of Texas EC
1-800-840-2957
deedee@hotec.coop



Group 3

Maggie Spurrier
Scholarship Chair
Farmers EC
(903) 453-0554
mspurrer@farmerelectric.coop



Group 4

René Wells
Vice President
Taylor EC
(325) 793-8539
rene.wells@taylorelectric.coop



Group 5

Kathy Shipp
Secretary/Arts & Crafts
Lamb County EC
(806) 385-5191
kshipp@lcec.coop



Group 6

Tawnya Boos
Membership Chair
Central Texas EC
1-800-900-2832
tawnya.boos@ctec.coop



Group 7

Holly Gunter
President/Raffles
Medina EC
(830) 741-7343
hollyg@medinaec.org



Bobbi Byford

Immediate Past
President/Lamplighter
Trinity Valley EC
(469) 261-9876
bobbi@tvec.coop



The Texas Rural Electric Women's Association helps improve life in rural Texas by supporting education and fostering a unified understanding of electric cooperatives and the communities they power.

Texas Electric Cooperatives, Inc., 1122 Colorado St., 24th Floor, Austin, TX 78701

Time To Renew Your TREWA Membership

Current memberships expire July 31, 2015.

The TREWA Board of Directors thanks you for your continued support of this organization.

TREWA membership is open to men and women of rural electric cooperatives. We encourage you to become a part of our growing organization as we continue to light the lamp of knowledge for the future.

Membership has its privileges. The children of TREWA members are eligible to apply for scholarships sponsored by TREWA. Members also receive an edition of The Lamplighter, which is sent twice a year via email.

Regular membership price is \$10 per year and, to date, we have more than 1,100 members. Once again, TREWA is offering membership at \$5 per person to cooperatives that enroll 100 percent of their directors, directors' spouses and employees (or spouse of an employee). We would like to acknowledge and thank the cooperatives that currently have 100 percent membership:

- ▶ Comanche EC, Group 4
- ▶ CoServ Electric, Group 3
- ▶ Greenbelt EC, Group 5
- ▶ Heart of Texas, Group 2
- ▶ North Plains EC, Group 5
- ▶ Rita Blanca EC, Group 5
- ▶ Southwest Texas EC, Group 4
- ▶ Taylor EC, Group 4
- ▶ Tri-County EC, Group 3

Renew your membership today by completing and returning the form at right. TREWA membership forms are also available at trewa.org.

TREWA Membership Form

Membership valid August 1, 2015, through July 31, 2016.

Membership: Renewal New Member

Membership Fees

Please check the appropriate dues assessments:

\$10 (1 year) \$20 (2 years)

First name _____

Last name _____

Address _____

City _____

State _____

ZIP _____

Home phone _____

Work phone _____

Email _____

Cooperative (spell out) _____

Relationship to cooperative:

Employee Director Member

Spouse of Employee Spouse of Director Other

Return to:

Mail: TREWA
Tawnya Boos
Membership Chair
1122 Colorado St., 24th Floor
Austin, TX 78701

Email: tawnya.boos@ctec.coop

Fax: (830) 997-9034