

The Lamplighter

TEXAS RURAL ELECTRIC WOMEN'S ASSOCIATION

JUNE 2014

Congratulations to our Scholarship Winners!



Madison Albin
Eldorado
Southwest Texas EC



Brittany Allen
Grandview
United Co-op Services



Katie Jo Blanscet
Henrietta
J-A-C EC



Justin Clifton
Snyder
Big Country EC



Jenny Clopton
Montgomery
Mid-South Synergy



Bailey Duke
Darrouzett
North Plains EC



K'Leigh Duke
Darrouzett
North Plains EC



David Andrew Germann
Seguin
Guadalupe Valley EC



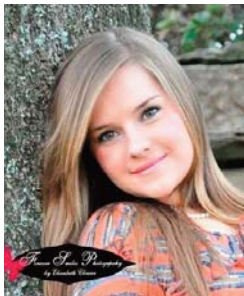
Richard W. Hardcopf
Boyd
Wise EC



Annie McGinnis
Van Alstyne
Grayson-Collin EC



Bernabe Isaac Mercado
Spur
South Plains EC



Tandra Milligan
Ben Wheeler
Wood County EC



Cassie La'Rae Picket
Henrietta
J-A-C EC



Lindsay Schomburg
New Ulm
San Bernard EC



Colby Christine Thompson
Paducah
South Plains EC

President's Message

Join Us for TREWA Annual Membership Meeting and Fundraising Events August 4-6 in Galveston



Bobbi Byford, President

Dear TREWA Members:

You may ask yourself as I do several times a week; "Where has the time gone?" You now find yourself looking at your calendar thinking, "It can't be that time yet." Well, ladies and gentlemen, it is that time. It is time to plan and prepare for the TEC Annual Meeting and TREWA's opportunity to participate with our membership, raffle and arts and crafts booths.

TREWA's annual membership meeting is part of the activities that take place during this time each year. We know that there are plenty of talented individuals out there and we encourage everyone to contribute your talents and efforts to our arts and crafts booth. All of the donated beautiful and unique items give our attendees plenty of choices to spend their dollars on to further our efforts. The arts and crafts booth is just one way TREWA fundraises during the annual meeting. Silent auctions and raffle tickets are also available for attendees to participate in this huge effort. Sales have allowed us fund the TREWA scholarship program, T-shirts for the Government-in-Action Youth Tour and the political advocacy effort, Rural Friends/ACRE. We are so grateful to each and every one of you who choose to participate and are members of TREWA.

Fifteen \$1,500 scholarships were awarded to students throughout the state (see Page 1 for the winners) for the 2014-2015 school year. This year there were 66 applicants, and as you can imagine, the judges had a very difficult time selecting only 15 recipients. If by chance you were an applicant and did not get selected this year, please apply again next year. The support of our membership is the driving force in the ability to provide these scholarships and the many other entities that receive funds from TREWA. Our mission has always been to educate and create interest in rural electric systems and issues. What a great way to support this mission, focusing on programs like the scholarships, Youth Tour and Rural Friends/ACRE.

Sand, shells and sunshine await our attendees this year as we gather in Galveston at Moody Gardens Resort. Our membership meeting will be Tuesday, August 5, at 9:30 a.m. The program this year is entitled "The Seven Women Project" and will be presented by Karen McCullough & Co. She will bring a high-energy, fun-filled program and share her entertaining and insightful views on the seven different styles of women.

So breeze in and join us, strike up old conversations with old friends, meet new friends and kick back and enjoy some light fare with us. Let us not forget there will be door prizes, so shake off the sand in your sandals, and we'll see you soon. Don't forget your sunscreen and your smile.

Blessings to you and yours, Bobbi

Blessings to you and yours, Bobbi

Spouse and Family Activities at the 2014 TEC Annual Meeting

Monday-Wednesday, August 4-6

- Visit and support TREWA arts and crafts booth, TREWA raffle booth and TEC exhibits
- Take in the sights and sounds of Galveston (See the TEC website for information on discounted tickets to Moody Gardens attractions and Schlitterbahn.)

Monday, August 4

5:30 p.m. **Dinner Cruise on the Colonel Paddlewheel**
Enjoy cocktails and a family-friendly dinner on this two-hour cruise of Galveston Bay.



Tuesday, August 5

7:00 a.m. **TEC Membership Buffet Breakfast**

9:30 a.m. **TREWA Membership Meeting and Spouse Program**
The Seven Women Project presented by Karen McCullough

11:45 a.m. **Rural Friends/ACRE Membership Luncheon**

5:30 p.m. **Dinner, Entertainment and Treasure Hunt**
Evening event with cocktails, buffet dinner, music, prizes and a treasure hunt as we tour the Moody Gardens Pyramids.



Wednesday, August 6



11:00 a.m. **Yes You Can!**
Hear the inspirational story of Team Hoyt—a father-son duo who have overcome tremendous odds to complete more than 1,000 events including marathons and Ironman competitions.

Time To Renew Your TREWA Membership

Memberships expire July 31, 2014

The TREWA Board of Directors would like to thank you for your continued support to this organization.

TREWA membership is open to men and women of rural electric cooperatives. We encourage you to become a part of our growing organization as we continue to light the lamp of knowledge for the future.

Membership has its privileges. The children of TREWA members are eligible to apply for scholarships sponsored by TREWA. Members also receive an edition of The Lamplighter, which is sent twice a year via email.

Regular membership price is \$10 per year and, to date, we have 560 members. Once again, TREWA is offering membership at \$5 per person to cooperatives that enroll 100 percent of their directors, directors' spouses and employees (or spouse of an employee). We would like to acknowledge and thank the cooperatives that currently have 100 percent membership:

- ▶ Heart of Texas EC, Group 2
- ▶ North Plains EC, Group 5
- ▶ Rita Blanca EC, Group 5
- ▶ Taylor EC, Group 4
- ▶ Tri-County EC, Group 3

Renew your membership today by completing and returning the form at right. TREWA membership forms are also available at trewa.org.

TREWA Membership Form

Membership valid August 1, 2014, through July 31, 2015

Membership: Renewal New Member

Membership Fees

Please check the appropriate dues assessments:

\$10 (1 year) \$20 (2 years)

First Name _____

Last Name _____

Address _____

City _____

State _____

ZIP _____

Home Phone _____

Work Phone _____

Email _____

Cooperative (spell out) _____

Relationship to cooperative:

Employee Director Member

Spouse of Employee Spouse of Director Other

Return

Mail: TREWA
Christine Jouett, Membership Chair
San Bernard EC
P.O. Box 1208
Bellville, TX 77418

Email: cjouett@sbec.org

Fax: (979) 865-9706

We Need Your Help!

Arts and crafts and silent auction items needed for this year's fundraising event

TREWA's Arts and Crafts Sale and Silent Auction are important elements of our fundraising efforts. And your donations are the key to their success.

Please consider providing arts and crafts items or an item that will have the members scrambling to bid on during the silent auction. The proceeds continue to fund scholarships each year and also support Rural Friends/ACRE.

To send a craft item or make a donation to TREWA, please mail to Bobbi Byford, Trinity Valley EC, P.O. Box 888, Kaufman, TX 75142. You can also give your craft or silent auction item to any TREWA board member.

Again, thank you for your continued support.

Please complete the form at right and send to Bobbi Byford, Trinity Valley EC, P.O. Box 888, Kaufman, TX 75142, or email bobbi@tvec.coop with donation information.



YES! I will donate a hand-crafted item to TREWA for the 2014 Arts and Crafts Sale.

First name _____

Last name _____

Address _____

City _____

State _____ ZIP _____

Item donated _____

Value amount _____

If you are unable to attend the meeting and would like to donate a crafted item, please designate someone to bring your item for you:

Name _____

2013-14 TREWA Board of Directors

Group 1

Lynne Erickson

Scholarship Chair
Houston County EC
(936) 852-7224
lynne@houstoncountyelec.com



Group 2

Dee Dee Lauterbach

Historian/Arts & Crafts
Heart of Texas EC
1-800-840-2957
deedee@hotec.coop



Group 3

Bobbi Byford

President/Lamplighter
Trinity Valley EC
(469) 261-9876
bobbi@tvec.coop



Group 4

Donna Brnovak

Taylor EC
(325) 793-8500
donna@taylorelectric.com



Group 5

Kathy Shipp

Secretary/Arts & Crafts
Lamb County EC
(806) 385-5191
kshipp@lcec.com



Group 6

Christine Jouett

Vice President/
Membership Chair
San Bernard EC
(979) 865-3171
cjouett@sbec.org



Group 7

Holly Gunter

Raffle
Medina EC
(830) 741-7343
hollyg@medinaec.org



Group 8

Rickie Warren

Immediate
Past President
Bailey County EC
(806) 272-4504
rwarren@bcecoop.com



The Texas Rural Electric Women's Association helps improve life in rural Texas by supporting education and fostering a unified understanding of electric cooperatives and the communities they power.

Texas Electric Cooperatives, Inc., 1122 Colorado St., 24th Floor • Austin, TX 78701