



## MESSAGE FROM THE PRESIDENT

It seems like yesterday we were gathering at the Gaylord Texan Resort in Grapevine, Texas for the 2022 TEC/TREWA Annual Meeting. That was August and here we are already into the month of November. Thanksgiving and Christmas are upon us.



**TREWA Board and Volunteers**

Attendees gathered from across the state to take part in learning about all types of things that affect the cooperatives, rekindle pre-covid friendships and support TREWA's fundraising efforts. Conference attendees had a "Typically Texas" experience with lots of warm welcomes, a wealth of opportunities to shop at our TREWA Market, bid on silent auction items and purchase raffle tickets.

The overwhelming generosity of those that donated and purchased items was phenomenal. This year's fundraising event raised \$40,000 through sponsorships and \$20,000 through onsite

efforts giving us a grand total of \$60,000 raised. These funds raised will aid in providing support to Rural Friends/ACRE causes, TREWA Scholarships and the Youth Tour Program. A big TEXAS YEE-HAW goes out to all you for your continued support of our TREWA organization. As we round out this year, we hope you all know how grateful we are to be a part of the electric cooperative world. We want to wish you a Happy Thanksgiving and a Merry Christmas.

God's Speed,



**Rachel Ford  
President**



# **SCHOLARSHIP WINNERS**

**Brooklyn Teichelman • Big County EC**  
**Carter Arrott • Coleman EC**  
**Hannah Nimmo • Farmers EC**  
**Bailee Sheddan • HILCO EC**  
**Courtney Coffey • HILCO EC**  
**Delainee Derting • HILCO EC**  
**Kourtney Wright • Houston County EC**  
**Meredith Tuggle • Houston County EC**  
**Charis Hall • Lyntegar EC**  
**Addee Williams • Lyntegar EC**  
**Courtney Woytek • Lyntegar EC**  
**Thomas Meyer • Rita Blanca EC**  
**Rebeka Knight • San Bernard EC**  
**Dianne Johnson • South Plains EC**  
**Savanah Olivarez • South Plains EC**  
**Reagan Dennis • South Plains EC**  
**Brandy Watson • South Plains EC**  
**Grant Phillips • South Plains EC**  
**Sofia Meador-Safont • South West Texas EC**  
**Addison Decker • Tri-County EC**



# Season's Greetings

**We wish you and yours a wonderful and blessed holiday season.  
Thanksgiving • Christmas • New Year's**





A new grassroots advocacy program by NRECA called Voices for Cooperative Power. VCP brings together a network of electric co-op members sharing the needs of their communities with elected officials. This program helps members engage with policymakers and advocate for their energy future.

VCP is a place for those who want to influence policy decisions impacting electric co-ops and their consumer-members. Members come together to communicate this perspective and protect our co-ops' ability to deliver affordable, reliable services.

Speaking up on issues that impact electric co-ops sends a message to elected officials about the needs of our communities – and their constituencies. VCP gives you a platform to talk about the many ways your electric co-op supports your community. Beyond delivering electricity, co-ops provide jobs, stability, and economic growth – all while ensuring that energy affordability and reliability remain foundational advantages of electric co-op membership.

Check out the website [voicesforcooperativepower.com](http://voicesforcooperativepower.com) for more information and how you can get involved.



Rural friends/ACRE supports legislators who have not only demonstrated an understanding of the unique role electric cooperatives have played in the development of rural communities, but who have also been recognized for their communities to represent the rural interests of electric cooperatives and their members.



**Rural Friends/ACRE** was formed with the mission of making the voice of electric co-op consumers heard in the Texas Legislature and U.S. Congress. Rural Friends of Electric Cooperatives is the nonpartisan political action committee that supports candidates seeking election to the Texas Legislature. It operates under a set of bylaws and the policies of a board of directors composed of electric co-op leaders elected from around the state. ACRE - the Action Committee for Rural Electrification - supports candidates for the U.S. Congress. Rural Friends and ACRE are subject to all state and federal campaign finance laws and reporting requirements.

**Membership** is strictly voluntary and consists of persons who have an interest in preserving and defending our local electric co-ops. Rural Friends/ACRE raises personal, voluntary contributions from supporters who care about our co-ops and the communities we serve.

**Contributions** go to candidates for state and federal office who have demonstrated support for electric co-op goals, who share co-op values and who want electric co-ops to be successful. Support is based on voting records on legislation affecting electric co-ops, statements on co-op issues, and historical stances on those issues.

**Joining is Easy.** Simply fill out and mail the form below along with your check to add your voice to those electric co-op leaders who are "making a difference" for electric co-ops in Austin and Washington, D. C.

---

### Rural Friends/ACRE Membership Form

Name: \_\_\_\_\_ Occupation: \_\_\_\_\_

Home Address: \_\_\_\_\_ City: \_\_\_\_\_ State: \_\_\_\_\_ Zip \_\_\_\_\_

Cooperative: \_\_\_\_\_ E-mail address: \_\_\_\_\_

I am a cooperative: ☐ Director ☐ Manager ☐ Employee ☐ Attorney ☐ Other \_\_\_\_\_

Are you a member of an electric cooperative? ☐ Yes ☐ No

Select yearly membership: ☐ \$25 ☐ \$50 ☐ \$100 Century Club ☐ \$150 Century Club Plus ☐ \$500 President's Club

☐ Enclosed are my membership dues in the amount of \$ \_\_\_\_\_.

☐ Please payroll deduct my dues. (If offered by your cooperative.)

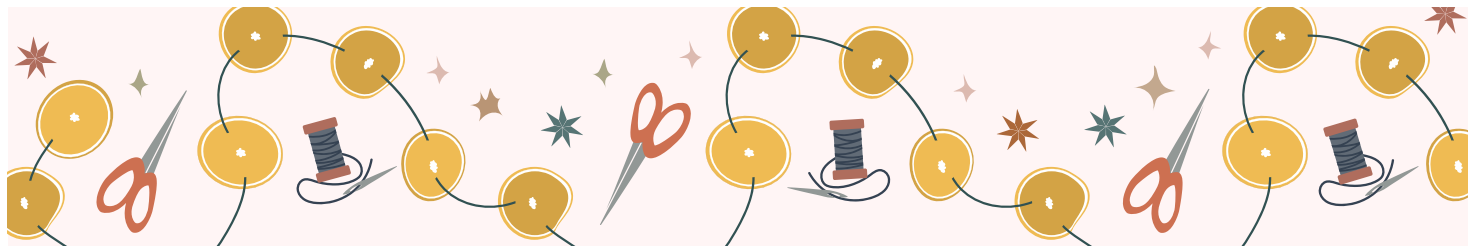
☐ Please add my dues to my monthly electric bill. (If offered by your cooperative.)

\_\_\_\_\_  
**Signature**

\_\_\_\_\_  
**Date**

*Contributions to Rural Friends of Electric Cooperatives (Rural Friends) and the Action Committee for Rural Electrification (ACRE) are not tax deductible. Contributions to Rural Friends and ACRE are voluntary and will be used for political purposes. You have the right to refuse to contribute without reprisal. Any contribution guidelines presented are merely suggestions. You are free to contribute more or less than the suggested amounts, or not at all. No one will be favored or disadvantaged by reason of the amount contributed or a decision not to contribute.*

Please remit to: <b>Rural Friends, 1122 Colorado St., 24<sup>th</sup> Floor, Austin, TX 78701.</b>
--



TREWA needs arts and crafts and silent auction items for the TREWA Market for the 2023 TEC/ TREWA Annual Meeting in August 2023. Be on the lookout for those awesome seasonal sales. Gift baskets can be created out of multiple items, whether handcrafted or purchased. Seasonal decorations are prime items for our fundraising efforts. We want to encourage you all to SHOP TILL YOU DROP OR CREATE TO MAKE IT GREAT. We know there are many talented people in our cooperative world, and we need your help.

**To send an item or donation to TREWA, please mail it to:**  
**Bobbi Byford, Trinity Valley EC**  
**PO Box 888, Kaufman, TX 75142**

**You can also give your item(s) to any TREWA board member.**  
**Again, thank you for your continued support.**

**Your donated items will help provide funds for TREWA scholarships and donations to Rural Friends/ACRE.**

## 2022/23 TREWA Board of Directors

### Group 1

#### **Dana Massey**

Arts & Crafts  
 Sam Houston EC  
 (936) 328-1279  
 dmassey@samhouston.net



### Group 2

#### **Kendra Markwardt**

Vice-President/  
 Scholarship Chair  
 HILCO EC  
 (254) 687-2331  
 Ext. 1145 • kmarkwardt@hilco.coop



### Group 3

#### **Malony Bartush**

Board Member  
 Pentex Energy  
 (940) 759-2211  
 malony.bartush@pentex.com



### Group 4

#### **Rachel Ford**

President  
 Comanche EC  
 (325) 356-2533  
 rford@ceca.coop



### Group 5

#### **Suzie Brown**

Board Member  
 Bailey County EC  
 (806) 272-4504  
 sbrown@bcecoop.com



### Group 6

#### **Celeste Mikeska**

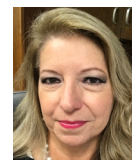
Board Member  
 Pedernales EC  
 (830) 868-6081  
 celeste.mikeska@peci.com



### Group 7

#### **Brenda Rodriguez**

Secretary/Treasurer  
 Wharton County EC  
 (979) 543-6271  
 brodriguez@mywcec.coop



### Group 3

#### **Karen Culpepper**

Past President  
 Wise EC  
 (940) 626-3003  
 kculpepper@wiseec.com



### **Bobbi Byford**

Communications  
 Trinity Valley EC  
 (469) 261-9876  
 bobbi@tvec.coop



### **Laura Melton**

Communications  
 Trinity Valley EC  
 (469) 344-1836  
 meltonl@tvec.coop



*"This is a wonderful day, I have never seen this one before."*  
 - Maya Angelou

# TREWA MEMBERSHIP

## *Current memberships expire July 31, 2023.*

### TREWA MEMBERSHIP FORM

Memberships are valid August 1 through July 31.

Membership: ☐ Renewal ☐ New Member

#### Membership Fees

Please check the appropriate dues assessments:

☐ \$10 (1 year) ☐ \$20 (2 years)

First name \_\_\_\_\_

Last name \_\_\_\_\_

Address \_\_\_\_\_

City \_\_\_\_\_

State \_\_\_\_\_ ZIP \_\_\_\_\_

Home phone \_\_\_\_\_

Work phone \_\_\_\_\_

Email \_\_\_\_\_

Cooperative (spell out) \_\_\_\_\_  
\_\_\_\_\_

Relationship to cooperative:

☐ Employee ☐ Director ☐ Member

☐ Spouse of Employee ☐ Spouse of Director ☐ Other

#### Return to:

Mail: TREWA Membership  
TEC Lockbox  
P.O. Box 201338  
Dallas, TX 75320

Email: [knejtek@tex-ec.org](mailto:knejtek@tex-ec.org)



The TREWA Board of Directors thanks you for your continued support of this organization.

TREWA membership is open to men and women of rural electric cooperatives. We encourage you to become a part of our growing organization as we continue to light the lamp of knowledge for the future.

Membership has its privileges. The children of TREWA members are eligible to apply for scholarships sponsored by TREWA. Members also receive an edition of The Lamplighter, which is sent twice a year via email.

Regular membership price is \$10 per year and, to date, we have almost 1,000 members. Once again, TREWA is offering membership at \$5 per person to cooperatives that enroll 100 percent of their directors, directors' spouses and employees (or spouse of an employee).

Renew your membership today by completing and returning the form at right. TREWA membership forms are also available at [trewa.org](http://trewa.org).