



MESSAGE FROM THE PRESIDENT

TREWA Looks Ahead to the 2026 Annual Meeting!

Mark your calendars now for the TEC/TREWA Annual Meeting, set for August 2-5, 2026, at the beautiful JW Marriott San Antonio Hill Country Resort.

This annual gathering brings together cooperative leaders, employees, trustees, and their families from across Texas for several days of learning, fellowship, and shared purpose. It is a time to reconnect with longtime friends, make new ones, celebrate our cooperative values, and return home energized for the year ahead.



The Hill Country setting offers something for everyone: outstanding meeting spaces, family-friendly activities, a relaxing spa, and plenty of opportunities to enjoy time together outside of the business sessions. Whether you are attending workshops, sharing meals, networking, or simply spending time with your cooperative family, this meeting is designed to strengthen both professional relationships and personal connections.

Our fundraising efforts begin now, and we are asking for your help in contributing handcrafted or locally made items for the silent auction and TREWA Market. These fundraisers are always a highlight of the event. Popular donations include themed gift baskets, artisan pottery, quilts, handmade purses, original paintings, jewelry and "bling," boots, woodwork, cornhole boards, custom knives, homemade sauces and jellies, and carved or painted décor. Items that reflect your local community are always especially loved and often become bidding favorites. Your creativity truly brings the market to life.

The impact of this generosity reaches far beyond the auction tables. Proceeds support the Government-in-Action Youth Tour, TREWA scholarships, and Rural Friends programs, each of which plays an important role in encouraging leadership, education, and service throughout our cooperative communities. Every donated item helps support students, families, and programs that embody the cooperative spirit.

So save the date, save the destination, and get ready to say, "Siri, take me to San Antonio" when August arrives. We are already looking forward to another memorable year together and cannot wait to see each of you at the 2026 TEC/TREWA Annual Meeting.

Rachel Ford
TREWA President



EMPOWERING YOUTH

How will you MAKE YOUR MARK?



A week of building memories, skills, leadership
and friendships that will last a lifetime!

Experience the trip of a lifetime with Youth Tour!

- Explore Washington, D.C. through historic monuments, world-class museums, and visits with elected officials.
- Build leadership skills and discover how you can make your mark on the future.
- Connect with students from across the country and form friendships that last a lifetime, all sponsored by your local electric cooperative.

Learn more about applying at
Electric.coop/YouthPrograms

MAKE YOUR MARK!





EMPOWERING YOUTH

Continued...

APPLY NOW

TREWA SCHOLARSHIPS

Now Open for 2026!

The Texas Rural Electric Women's Association (TREWA) is offering twenty scholarships of \$1,000 each to support the educational goals of cooperative families. Scholarships are open to current TREWA members and their children. Applicants must also be members or employees of a Texas electric cooperative, or the child of a cooperative employee, and must be current TREWA members at the time of application.



TREWA scholarships are available to graduating high school seniors, full-time college students, and adults returning to school full time. Awards may be used at accredited colleges, universities, community colleges, junior colleges, business schools, or trade and technical schools. Selection is based on leadership qualities, career goals, financial need, energy awareness, essay content, and knowledge of the rural electric program, not strictly on grades.

Each completed application must include an application form, three letters of recommendation, a current photo, and proof of cooperative membership or employment. Scholarships are paid in two installments, one per semester, and recipients must provide proof of full-time enrollment. Applications must be received by March 15, 2026 to be considered.



TREWA awards each scholarship only once per recipient, helping expand opportunities to as many cooperative families as possible. This program continues TREWA's long-standing mission of encouraging leadership, education, and service within the electric cooperative community.

Applications close March 15, 2026.

Scan the QR code below to apply today.





A new grassroots advocacy program by NRECA called Voices for Cooperative Power. VCP brings together a network of electric co-op members sharing the needs of their communities with elected officials. This program helps members engage with policymakers and advocate for their energy future.

VCP is a place for those who want to influence policy decisions impacting electric co-ops and their consumer-members. Members come together to communicate this perspective and protect our co-ops' ability to deliver affordable, reliable services.

Speaking up on issues that impact electric co-ops sends a message to elected officials about the needs of our communities – and their constituencies. VCP gives you a platform to talk about the many ways your electric co-op supports your community. Beyond delivering electricity, co-ops provide jobs, stability, and economic growth – all while ensuring that energy affordability and reliability remain foundational advantages of electric co-op membership.

Check out the website voicesforcooperativepower.com for more information and how you can get involved.



Rural friends/ACRE supports legislators who have not only demonstrated an understanding of the unique role electric cooperatives have played in the development of rural communities, but who have also been recognized for their communities to represent the rural interests of electric cooperatives and their members.



For more information on Rural Friends of Electric Cooperatives, or eligibility to participate, please contact Jen Johnston, Government Relations Coordinator, at (512) 486-6221 or jjohnston@texas-ec.org.



BECOME A MEMBER OF RURAL FRIENDS/ACRE

Rural Friends/ACRE was formed with the mission of making the voice of electric co-op consumers heard in the Texas Legislature and U.S. Congress. Rural Friends of Electric Cooperatives is the nonpartisan political action committee that supports candidates seeking election to the Texas Legislature. It operates under a set of bylaws and the policies of a board of directors composed of electric co-op leaders elected from around the state. ACRE - the Action Committee for Rural Electrification - supports candidates for the U.S. Congress. Rural Friends and ACRE are subject to all state and federal campaign finance laws and reporting requirements.

Membership is strictly voluntary and consists of persons who have an interest in preserving and defending our local electric co-ops. Rural Friends/ACRE raises personal, voluntary contributions from supporters who care about our co-ops and the communities we serve.

Contributions go to candidates for state and federal office who have demonstrated support for electric co-op goals, who share co-op values and who want electric co-ops to be successful. Support is based on voting records on legislation affecting electric co-ops, statements on co-op issues, and historical stances on those issues.

Joining is Easy. Simply fill out and mail the form below along with your check to add your voice to those electric co-op leaders who are "making a difference" for electric co-ops in Austin and Washington, D. C.

Rural Friends/ACRE Membership Form

Name: _____ Occupation: _____

Home Address: _____ City: _____ State: _____ Zip: _____

Cooperative: _____ E-mail address: _____

I am a cooperative: ☐ Director ☐ Manager ☐ Employee ☐ Attorney ☐ Other _____

Are you a member of an electric cooperative? ☐ Yes ☐ No

Select yearly membership: ☐ \$25 ☐ \$50 ☐ \$100 Century Club ☐ \$150 Century Club Plus ☐ \$500 President's Club

☐ Enclosed are my membership dues in the amount of \$ _____.

☐ Please payroll deduct my dues. (If offered by your cooperative.)

☐ Please add my dues to my monthly electric bill. (If offered by your cooperative.)

Signature _____

Date _____

Contributions to Rural Friends of Electric Cooperatives (Rural Friends) and the Action Committee for Rural Electrification (ACRE) are not tax deductible. Contributions to Rural Friends and ACRE are voluntary and will be used for political purposes. You have the right to refuse to contribute without reprisal. Any contribution guidelines presented are merely suggestions. You are free to contribute more or less than the suggested amounts, or not at all. No one will be favored or disadvantaged by reason of the amount contributed or a decision not to contribute.

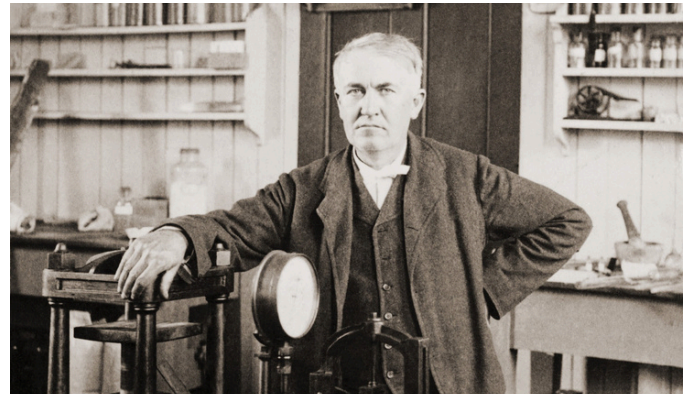
Please remit to: Rural Friends, 1122 Colorado St., 24th Floor, Austin, TX 78701.



JANUARY MILESTONES

In Electric Appliances

January has quietly marked some significant milestones in the story of electric appliances, the very technologies that changed daily life for families and helped electrification become a home essential. On January 27, 1880, inventor Thomas Edison was granted a patent for his improved incandescent electric light bulb, making longer-lasting electric light commercially practical and paving the way for the electrified homes we know today.



January is also tied to early breakthroughs in household labor-saving devices. In 1908, one of the first commercially produced electric washing machines went on the market, transforming laundry from a day-long chore to a more manageable task for families. These inventions, and many that followed, helped electrified appliances become symbols of convenience and comfort in homes served by rural electric cooperatives.



As Eleanor Roosevelt once said, “The future belongs to those who believe in the beauty of their dreams.” (While not about appliances, her words remind us that progress begins with imagination and belief, just as early inventors envisioned a future where electricity served every household.)

From light bulbs to washing machines, January reminds us how far electric technology has come, and how vital electricity has been in powering modern life.



Snow Day White Chicken Chili

2 cups cooked, shredded chicken	1 tsp cumin
2 cans Great Northern beans, drained	1 tsp chili powder
1 can corn, drained	1/2 tsp oregano
1 (4-oz) can diced green chiles	1/2 tsp salt (to taste)
4 cups chicken broth	1/2 cup sour cream
1 small onion, diced	1 cup shredded Monterey Jack cheese
2 cloves garlic, minced	1 tbsp olive oil

Cook onion in olive oil until soft, then add garlic, spices, and green chiles for a quick sauté. Add broth, beans, corn, and chicken, and let it simmer 15–20 minutes. Reduce heat, stir in sour cream and cheese until creamy, then season to taste and enjoy. Add fun toppings like tortilla strips, avocado wedges, lime, or extra cheese!



COOPERATIVE HISTORY

Continued...

HOUSEKEEPING

The Electric Way

Once upon a time, housekeeping meant muscle. Buckets, brooms, washboards, and a whole lot of elbow grease kept homes running. Then electricity arrived and said, “What if we make this... easier?” Suddenly, housekeeping took a turn toward the future, and it has not slowed down since. Take the refrigerator, for example. In the 1910s, “refrigeration” meant iceboxes that actually needed... ice. Big blocks of it. Delivered by someone much stronger than most of us.



Bobbi Byford
*TVEC Director of
Corporate Relations*

Early electric refrigerators around 1915 were loud, bulky, and slightly intimidating machines with compressors that looked like science projects perched on top. Fast-forward to today and refrigerators have touch screens, cameras that let you peek inside from the grocery store, temperature zones, and reminders to buy milk. They do everything except cook dinner, and honestly, they’re getting close.



The dishwasher has evolved significantly since its inception in the late 1800s, when hand-washing was time-consuming and tough on hands. Early models were cumbersome and hand-cranked, but electric motors in the early 20th century made them practical. Modern dishwashers are quiet, efficient, energy-smart, and feature various settings like eco wash and turbo dry, leaving our great-grandparents astonished at both the technology and our dish collections.

Then there’s the washing machine, the true hero of the laundry room. Early electric models around the 1910s replaced washboards and boiling pots, but they still required wringers, careful feeding of clothes through rollers, and nerves of steel. Now we choose cycles on digital panels, wash comforters the size of small planets, and some machines even text us when the load is finished. Laundry day may never be anyone’s favorite day, but electricity turned it from a back-breaking chore into a push-button task.

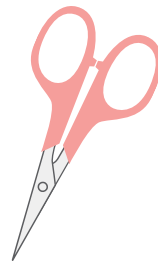
And of course, we cannot forget the vacuum cleaner. Early vacuums were so heavy they had to be wheeled from house to house or run on hand pumps. Today we have lightweight stick vacuums, HEPA filters, and robots that glide around like small pets with better manners. Some even map the house, avoid socks, and politely return themselves to charging stations like tiny butlers.

Electricity did not just light our homes; it transformed how we live inside them. From iceboxes to smart fridges, wringers to Wi-Fi washers, and broomcorn to robot vacuums, “housekeeping the electric way” has been a steady march toward comfort and convenience. And if history is any hint, the next 100 years will be just as surprising... and hopefully require even less elbow grease.

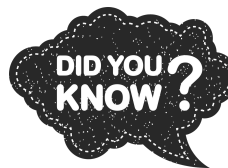


TEC/TREWA Annual Meeting

SILENT AUCTION & CRAFT DONATION FORM



☐ **YES! I will donate a craft/art item!**



Your donated items will help provide funds for TREWA scholarships and donations to Rural Friends/ACRE.

Name

City, State, Zip

Item Donated

Item Value

Designated Person Bringing Item to Meeting:



Stay tuned for more details about the Annual Meeting!



Texas Electric Cooperatives
Your Touchstone Energy Partner



To send a craft item or make a donation to TREWA, please mail to:

Bobbi Byford, Trinity Valley EC
P.O. Box 888, Kaufman, TX 75142

thanks
for your
support

You can also give your craft or silent auction item to any TREWA Board Member.

2026 TREWA Board of Directors

Group 1

Dana Massey

Arts & Crafts

Sam Houston EC

(936) 328-1279

dmassey@samhouston.net



Group 2

Kendra Markwardt

Vice-President/
Scholarship Chair

HILCO EC

(254) 687-2331

Ext. 1145 • kmarkwardt@hilco.coop



Group 3

Lindsey Mobley

Board Member

United Cooperative
Services

(817) 782-8381

lindseym@ucs.net



Group 4

Rachel Ford

President

Comanche EC

(325) 356-2533

rford@ceca.coop



Group 5

Suzie Brown

Board Member

Bailey County EC

(806) 272-4504

sbrown@bcecoop.com



Group 6

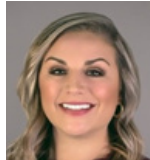
Dawn Southwell

Secretary/Treasurer

Pedernales EC Inc.

(830) 868-6142

Dawn.Southwell@peci.com



Group 7

Dorina Villarreal

Board Member

Nueces EC

(361) 767-7337

dvillarreal@nueceselectric.org



Group 3

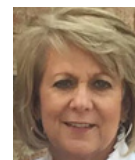
Karen Culpepper

Past President

Wise EC

(940) 626-3003

kculpepper@wiseec.com



Bobbi Byford

Communications

Trinity Valley EC

(469) 261-9876

bobbi@tvec.coop



Laura Melton

Communications

Trinity Valley EC

(469) 344-1836

meltonl@tvec.coop



“

If your actions create a legacy that inspires others to dream more, learn more, do more, and become more, then you are an excellent leader.

Dolly Parton

”

TREWA MEMBERSHIP

**Current memberships expire
July 31, 2026.**

TREWA MEMBERSHIP FORM

Memberships are valid August 1 through July 31.

Membership: ☐ Renewal ☐ New Member

Membership Fees:

Please check the appropriate dues assessments:

☐ \$10 (1 year) ☐ \$20 (2 years)

First Name _____

Last Name _____

Address _____

City _____

State _____

Zip Code _____

Home Phone _____

Work Phone _____

Email _____

Cooperative Name _____

Please spell out

Relationship to Cooperative:

☐ Employee ☐ Director ☐ Member
☐ Spouse of Employee ☐ Spouse of Director
☐ Other _____

Return to:

Mail: TREWA Membership
TEC Lockbox
P.O. Box 201338
Dallas, TX 75320



Email: knejtek@tex-ec.org



The TREWA Board of Directors thanks you for your continued support of this organization.

TREWA membership is open to men and women of rural electric cooperatives. We encourage you to become a part of our growing organization as we continue to light the lamp of knowledge for the future.

Membership has its privileges. The children of TREWA members are eligible to apply for scholarships sponsored by TREWA. Members also receive an edition of The Lamplighter, which is sent twice a year via email.

Regular membership price is \$10 per year and, to date, we have almost 1,000 members. Once again, TREWA is offering membership at \$5 per person to cooperatives that enroll 100 percent of their directors, directors' spouses and employees (or spouse of an employee).

Renew your membership today by completing and returning the paper form or online TREWA membership forms are also available at trewa.org.

LET'S CELEBRATE

Let's Be Aware

January

Slow Cooking Month
Winter Storm Prep
National Bath Safety Month

February

Black History Month
Heart Month
FFA Week (21-28)
Engineers Week (22-28)

March

Women's History Month
Red Cross Month
Lawnmower Maintenance Week (1-7)
Ladder Safety Month



Reminders

Technology Day - January 6
Static Electricity Day - January 9
Cut the Cord Day - February 9
Battery Day - February 18
Global Day of Unplugging - March 6

Upcoming Holidays

MLK Day - January 19
Valentine's Day - February 14
Presidents' Day - February 16
Women's Day - March 17
St. Patrick's Day - March 17

Don't Forget

TREWA Scholarship Applications are due March 15, 2026.

